



Trans-stormer

Automatic transmission shifter

- Made in Rochester, New York
- OEM Replacement, Hot Rod or Custom Applications
- TH350, TH400, TH200-4R, TH700-R4, TH4L60, TH4L65, TH4L80
- Choice of Rod Linkage or Cable Linkage
- Rod Linkage 5/16 Inch Diameter RH & LH Threaded Ends
- Floor Mounted Adjustable Height
- Low Profile for Rod linkage
- Fits under most OEM Consoles
- Stainless Steel Handle
- 8 Inch, 12 Inch and 18-Inch Handles Available.
- Black Zinc Plated Components
- Button-Top Ball
- Optional Smoothie Ball (Sept 2008) or T-Handle (Jan 2009) Available
- Fully Functional Neutral safety/Backup Light Switch (Aug 2008) Available
- Console Available (Sept 2008)



SW280-R



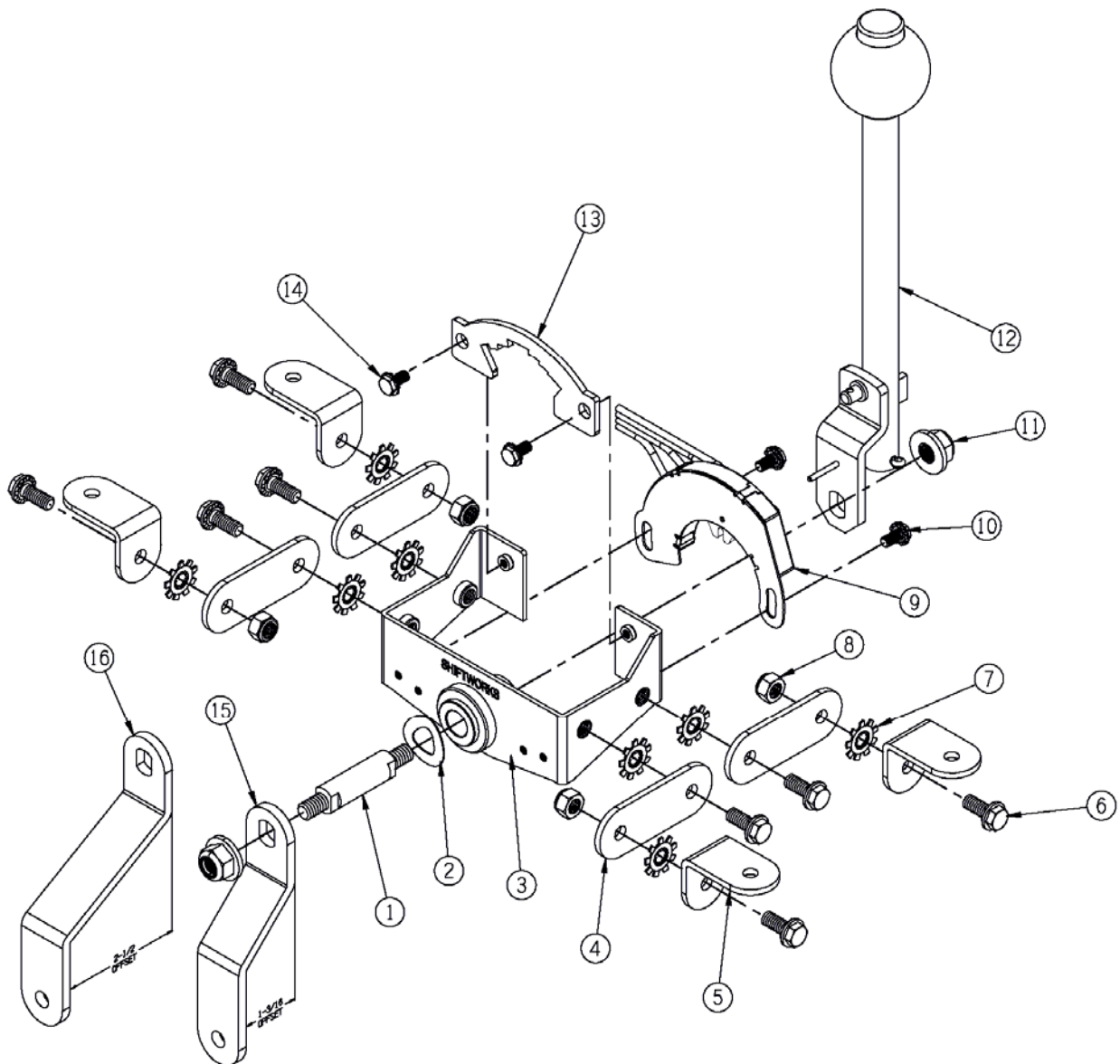
SW280-C



Rod Linkage #SW280-R

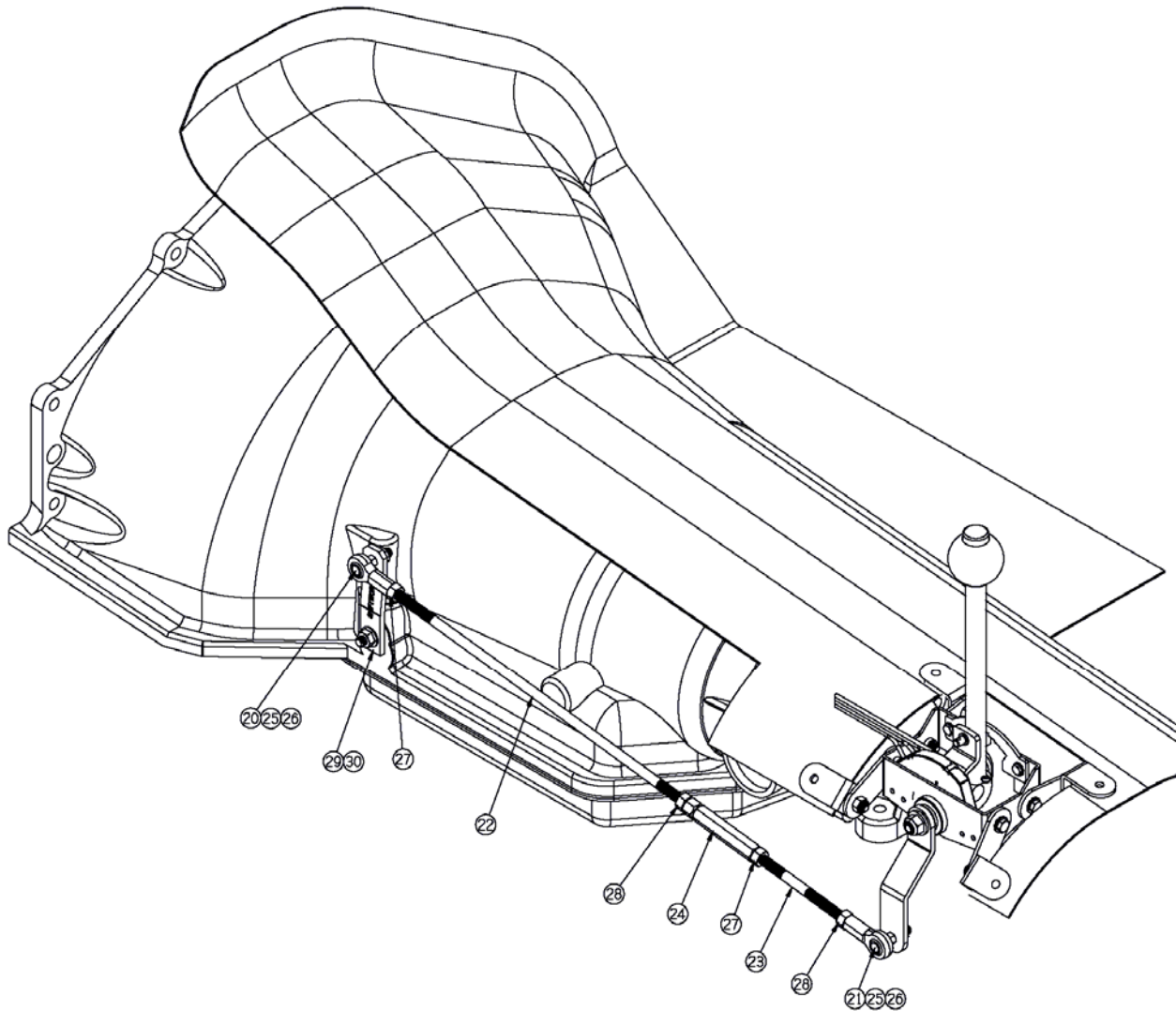
SHIFTWORKS® uses 5/16 inch linkage components with *left and right hand threaded ends*. The value of using this combination is that the final adjustment can be made by simply turning the rod clockwise or counter clockwise with the linkage installed to achieve the best fit. Many combinations of rod length are possible by shortening and combining the linkages included. Use the jam nuts to tighten the linkage. The shifter is designed to allow a very low profile by simply adjusting the legs to suit.

EXPLODED VIEW



Rod Linkage

TYPICAL INSTALLATION



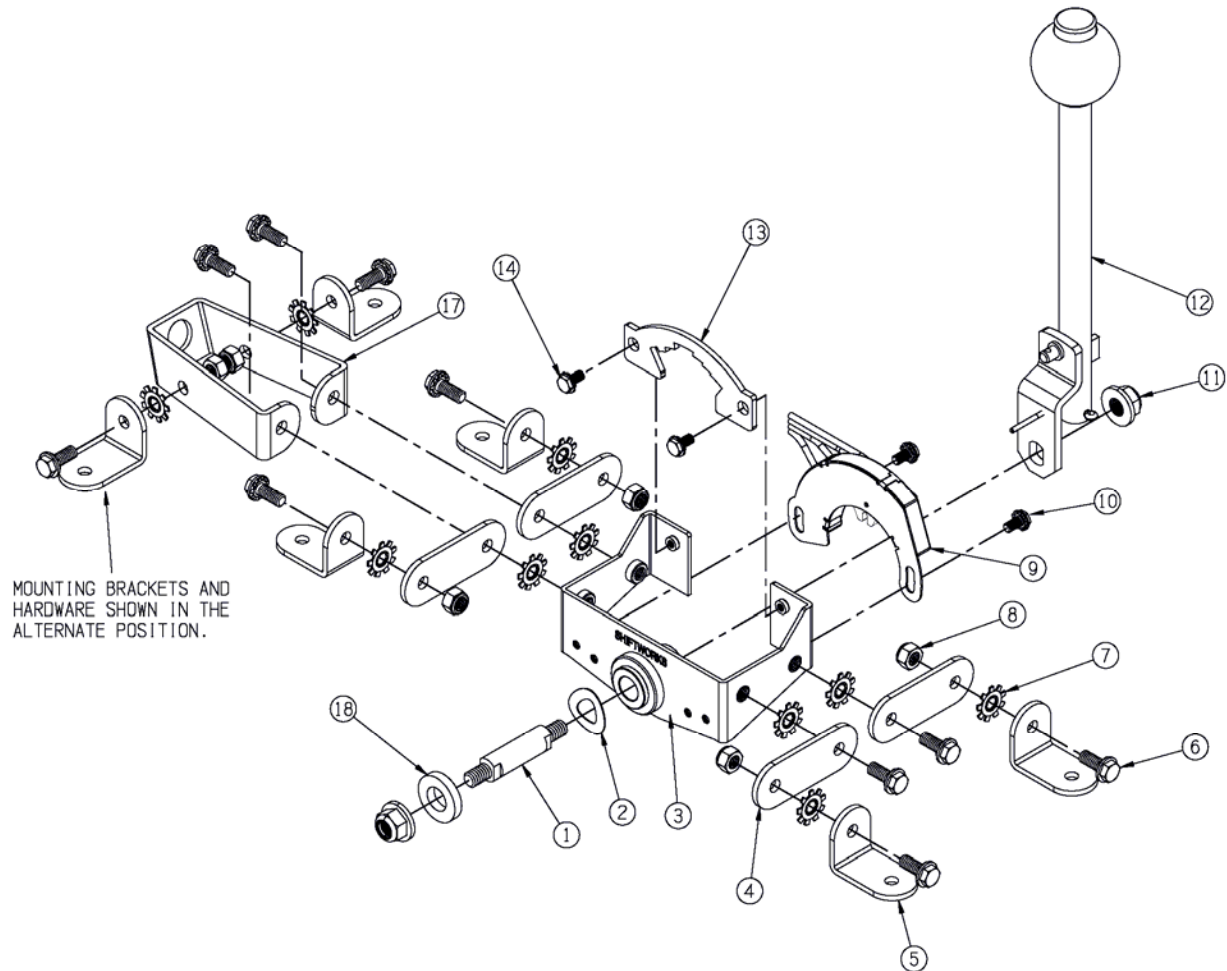
- Attach universal mounting legs/brackets to the shifter base. Use star washers between mating surfaces.
- Determine location of shifter and height required to clear console. Shifter can be lowered to beneath the floor if necessary. See illustration above.
- Adjust legs height and position.
- Mark and create hole in floor as necessary.
- Remove heavy washer on outside of shifter base and replace with offset shift arm
- Put transmission control arm on pointing up, with SHIFWORKS® name facing out.
- Use linkage components as required. Not all may be necessary. Components are RIGHT and LEFT hand threads.
- Adjust detent stops by spinning rod linkage.

Cable Linkage

#SW280-C

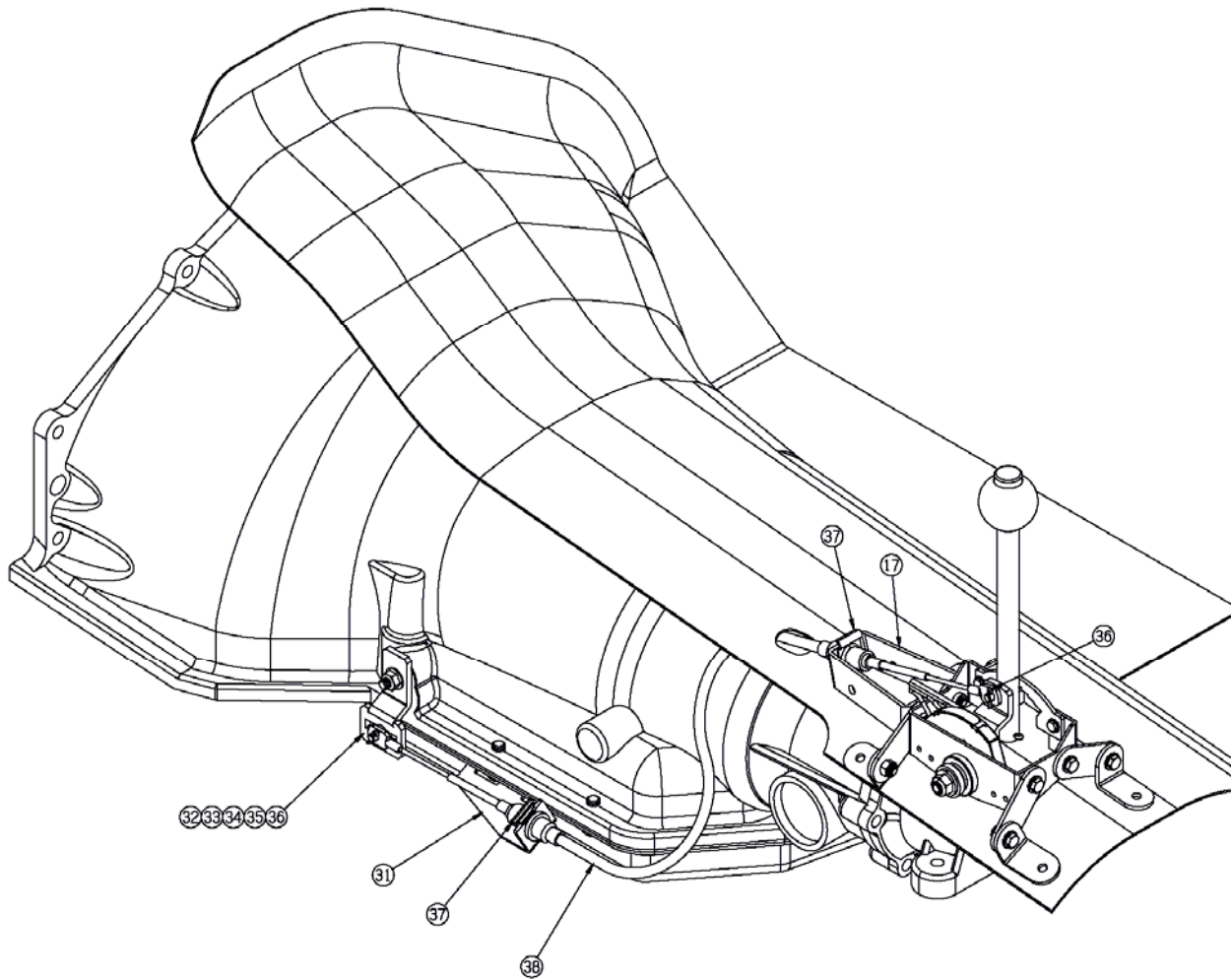
The Trans-stormer by SHIFWORKS® is also available as a cable installation. This form is suited to many factory consoles. Legs can raise and lower the shifter as necessary. Replace the outboard heavy washer #18 with NSS Actuator #19. The cables are adjustable at each bulkhead and via the pin slider located in the transmission control arm. Use a 1 ½ inch hole saw for the cable exit hole. The cable should exit the floor as soon as possible. The shifter handle is offset but centered in the shifter body. Determine which way the shifter best fits the console. By reversing the Cable Mount (17), the Shift Plate (13), and mounting the Neutral Safety/Back-up switch reversed and on the outside of the shifter, the shifter is now entirely reversed 180 degrees and able to fit left side space challenged consoles.

EXPLODED VIEW



CABLE LINKAGE

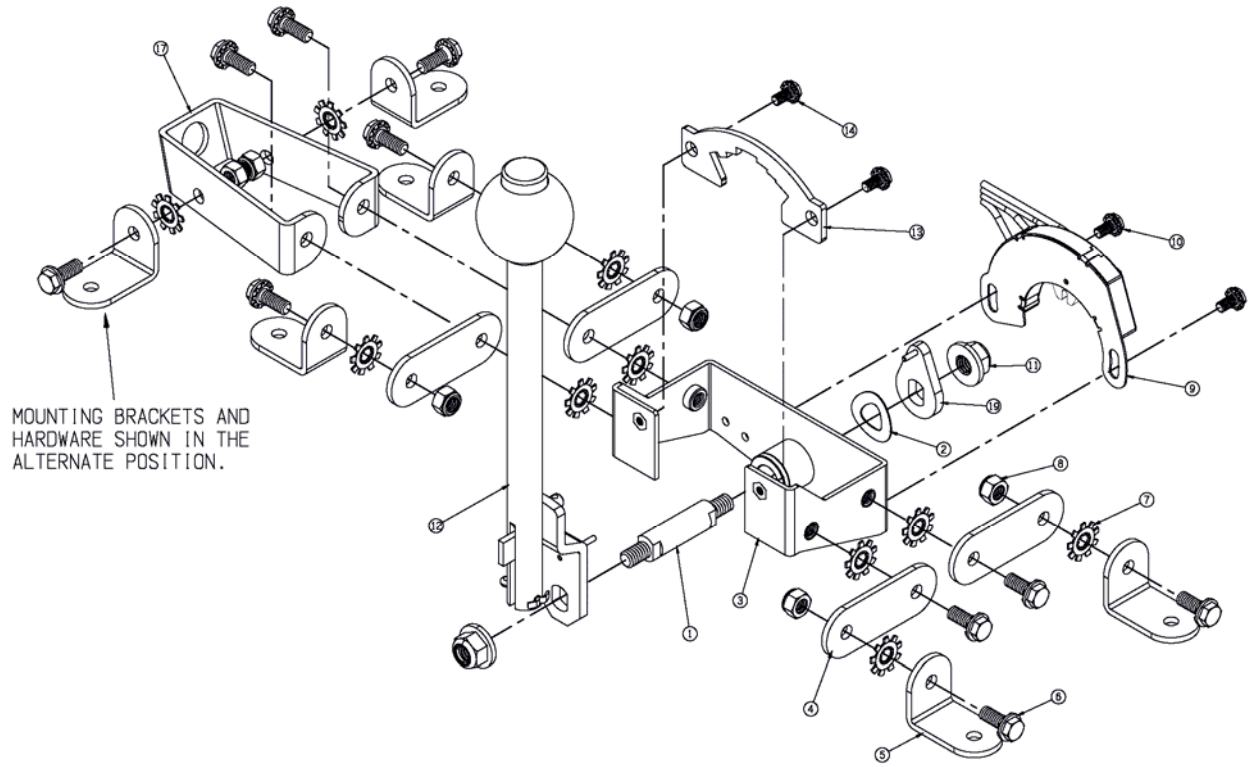
TYPICAL INSTALLATION



- Attach universal mounting legs/brackets to the shifter base. Use star washers between mating surfaces.
- Remove Heavy Washer and replace with the Neutral Safety Switch (NSS) actuator provided.
- Determine location of shifter and height required to clear console. Shifter can be reversed 180 degrees if necessary. Simply reverse the cable mount bracket and the detent. If using the NSS it is then mounted on the outside of the shifter as per the illustration. Adjust legs height and position.
- The cable exit hole should be about 1 ½ inches in diameter and exit the car floor as soon as possible. Standard cable length is 32 inches.
- Put transmission control arm on pointing down and use pan bolts to attach cable bracket to transmission.
- Cable can be adjusted at the bulkheads and with the pin in the control arm.
- Adjust detent stops by adjusting the cable..

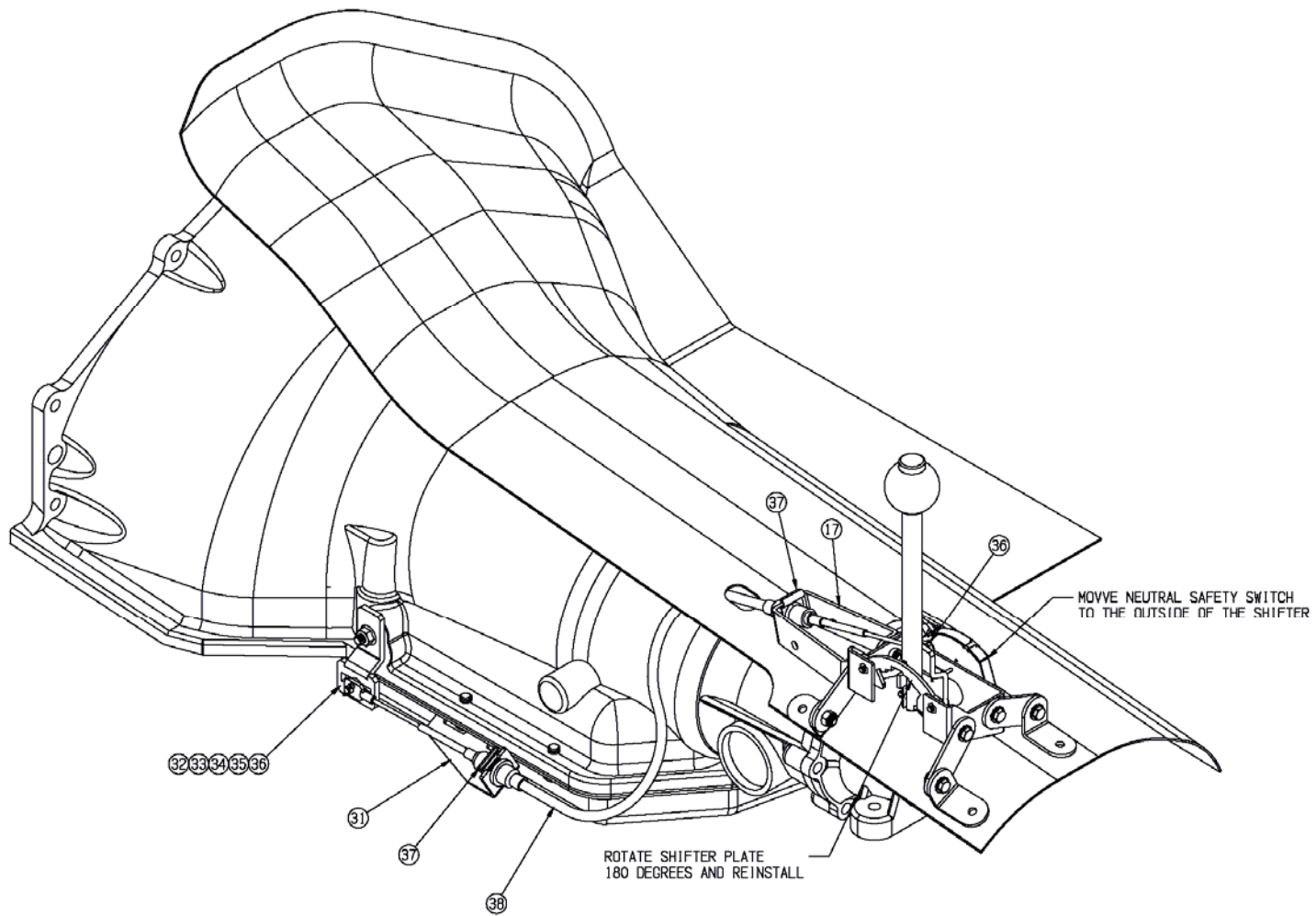
CABLE LINKAGE

Shifter housing rotated 180 degrees



CABLE LINKAGE

Typical installation
Shifter housing rotated 180 degrees





Neutral Safety/Back-up Switch

Imagine an aftermarket shifter functioning like an OEM shifter with full capability for neutral safety functionality and back-up lights! Look no further the Trans-stormer has that capability with the purchase of SHIFTWORKS® NSS-520. The switch is normally mounted within the body of the shifter unless the shifter is reversed for certain cable console fit applications, in which case the switch is mounted on the outside of the shifter body.

Shiftworks Console

For applications not using an OEM console SHIFTWORKS® has its own console available. Our console can also be trimmed to fit. The top plate indicator is stamped anodized aluminum and can be purchased separately for customers interested in building their own console.

Assembly Instructions

Instructions and illustrations are provided in how to transform the shifter to different forms. The flexibility in design provides great opportunity for further mounting changes by the customer to fit most applications.

Warranty

SHIFTWORKS® warrants the Trans-stormer shifter against defects in manufacturing for 2 years from the date of purchase. See our website for further details. www.shiftworks.com