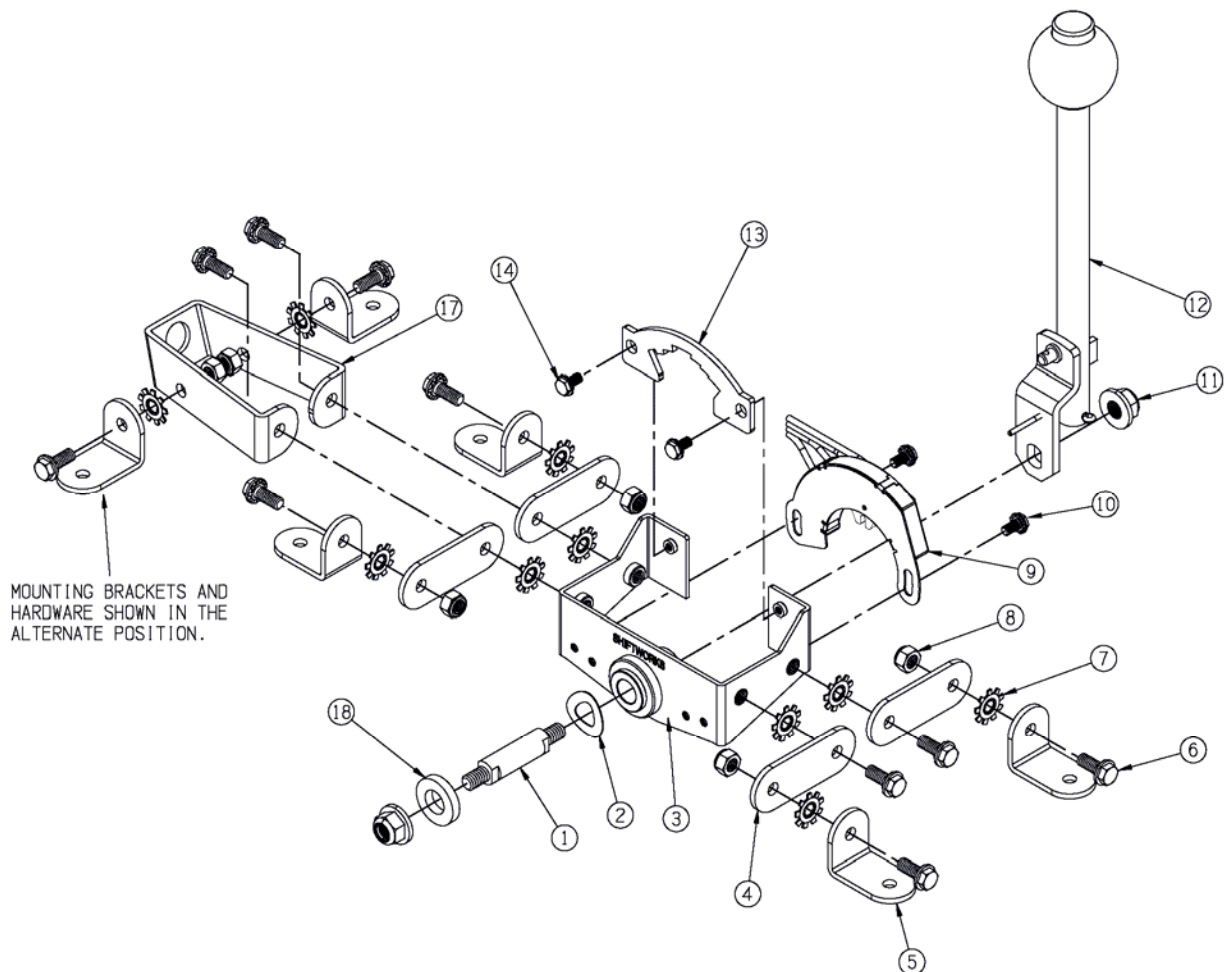




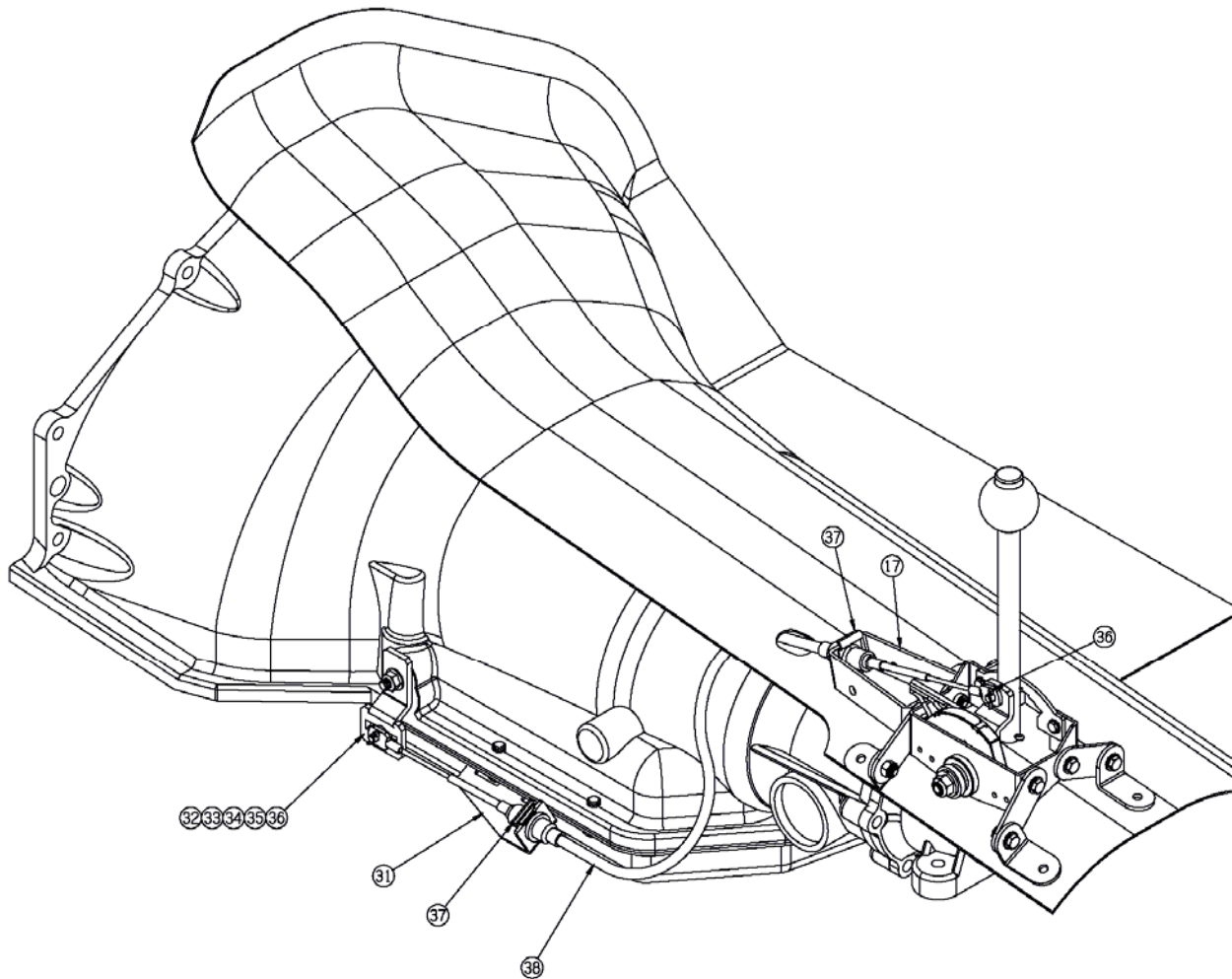
CABLE LINKAGE #SW280-C

The TRANS-stormer by SHIFTWORKS® is also available as a cable installation. This form is suited to many factory consoles. Legs can raise and lower the shifter as necessary. Replace the outboard heavy washer #18 with NSS Actuator #19. The cables are adjustable at each bulkhead and via the pin slider located in the transmission control arm. Use a 1 ½ inch hole saw for the cable exit hole. The cable should exit the floor as soon as possible. The shifter handle is offset but centered in the shifter body. Determine which way the shifter best fits the console. By reversing the Cable Mount (17), the Shift Plate (13), and mounting the Neutral Safety/Back-up switch reversed and on the outside of the shifter, the shifter is now entirely reversed 180 degrees and able to fit left side space challenged consoles.

EXPLODED VIEW



CABLE LINKAGE TYPICAL INSTALLATION

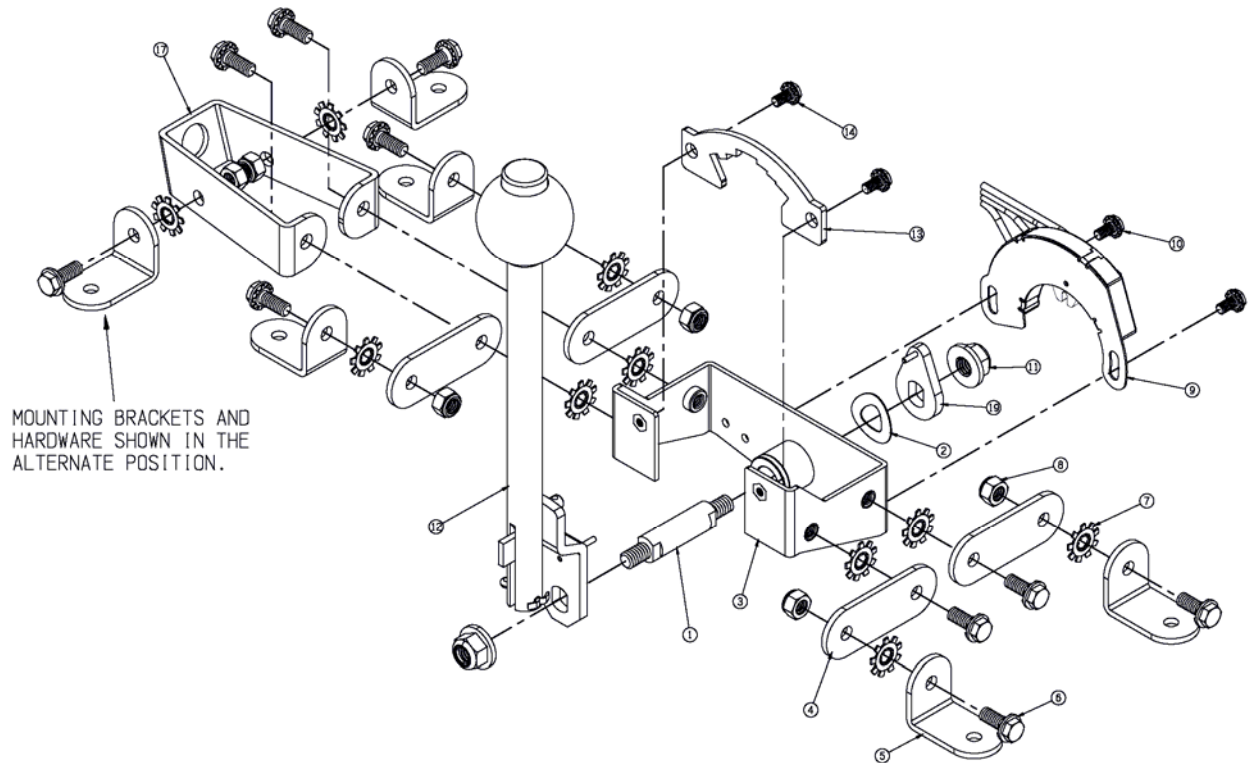


- Attach universal mounting legs/brackets to the shifter base. Use star washers between mating surfaces.
- Remove Heavy Washer and replace with the Neutral Safety Switch (NSS) actuator provided.
- Determine location of shifter and height required to clear console. Adjust legs height and position.
- The cable exit hole should be about 1 ½ inches in diameter and exit the car floor as soon as possible. Standard cable length is 32 inches.
- Put transmission control arm on pointing down and use pan bolts to attach cable bracket to transmission.
- Cable can be adjusted at the bulkheads and with the pin in the control arm. Adjust detent stops by adjusting the cable with both the transmission and the shifter in the same gear. We recommend Drive or OverDrive.
- Neutral Safety/Back-up Switch. Purple wires are for Neutral safety and Green and Pink wires are for back-up lights. If Switch is installed it is pre-adjusted. Adjust for Back-up lights first, and then rotate switch to suit. If pre-installed, switch is pre-set.

CABLE LINKAGE

SHIFTER HOUSING ROTATED 180 DEGREES

Shifter can be reversed 180 degrees if necessary. Simply reverse the cable mount bracket (17) and the detent (13). If using the NSS (9) it is then mounted on the outside of the shifter as per the illustration and it is operated by replacing the outside washer with the switch actuator (19).



CABLE LINKAGE

TYPICAL INSTALLATION SHIFTER HOUSING ROTATED 180 DEGREES

